

DERBY

Archirivolto Design / 2014



1 SEATING

Armchair sled base .

Shell: integral polyurethane foam with inner steel frame. Surface finish lightly textured with the external back displaying a raised pattern.

The shell, in fire retardant material meeting EN 1021-1/2:2014 and Class 1 Standards, is offered in monochromatic or bicoloured finish.

Upholstered version: Shell with inner steel frame and cold-injected polyurethane foam.

Fire retardant foam meets EN 1021-1/2:2014 and Class 1IM Standards. (preferably in solid colours)

Special foam meeting the 5852 British Standards is available on request.

Covers in fabric, faux-leather or COM

Frame: steel rod Ø 12mm in powder coated or chromed finish.

Glides: thermoplastic material



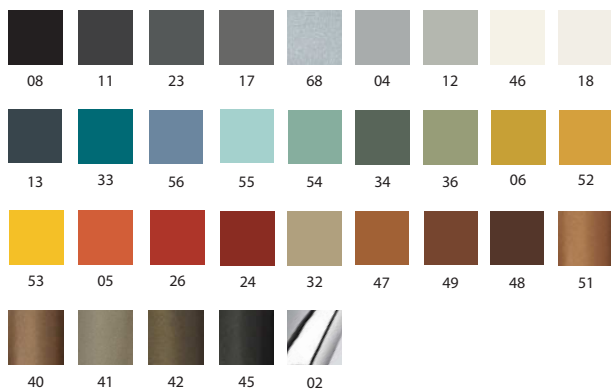
Awards:

2016: USA Winner of 2016 Adex Award for Design Excellence - Platinum Award

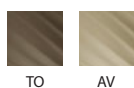
	Article	Finish	Powder coated frame	Chromed frame	pcs / dimensions volume / gross weight product net weight
Armchair	S0090	Integral polyurethane			1 pc / 65,5x63,5x83,5 cm 0,35m ³ / 15 Kg 11,5 Kg
Armchair	I0030	Gazebo Xtreme Plus / Magnum / Rivet / Main Line Flax Blazer / Gingko / Step Melange / Silvertex / Remix3 Steelcut Trio3 / Atlas / Canvas2 C.O. faux leather / C.O.M. (solid colour)			1 pc / 65,5x63x83,5 cm 0,35m ³ / 15,90 Kg 12,40 Kg

Finishes

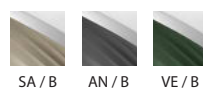
Frame



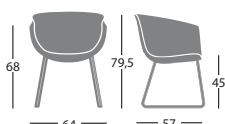
Polyurethane-Monochromatic finish



Polyurethane-Bicoloured finish



Dimensions



Customer's own material

For customer's own material, the form at the end of the price list shall apply, to be sent to Segis Spa with the Client's signature.

Solid fabric:
for 1 pc shell 180 cm (H. 140 cm) + 180 cm for material approval

Resistance tests

Art. S0090
EN 16139 :2013 4.1 - General requirements
EN 16139 :2013 4.2.3 - Shear and squeeze point during use
EN 16139 :2013 4.3.1 - General
EN 16139 :2013 4.3.3 - Non-swiveling chairs
EN 16139 :2013 4.5 - Safety of the construction
EN 16139 :2013 5. - Safety, strength and durability requirements
EN 16139 :2013 6. - Test methods
BS EN 1728:2012 6.4 - Seat and back static load test
BS EN 1728:2012 6.5 - Seat front edge static load test
BS EN 1728:2012 6.6 - Vertical static load on back
BS EN 1728:2012 6.10 - Armrest sideways static load test
BS EN 1728:2012 6.11 - Armrest downwards static load test
BS EN 1728:2012 6.15 - Leg forward static load test
BS EN 1728:2012 6.16 - Leg sideways static load test
BS EN 1728:2012 6.17 - Combine seat and back durability test
BS EN 1728:2012 6.18 - Seat front edge durability test
BS EN 1728:2012 6.20 - Armrest durability test
BS EN 1728:2012 6.24 - Seat impact test
BS EN 1728:2012 6.25 - Back impact test
BS EN 1728:2012 6.26 - Arm impact test